



Sigma Nu Fraternity

Alumni Training Institute Webinar

January 20, 2022

Program Topics

- Best Practices for working with Today's College Students
- Chapter Advisor and Alumni Advisory Board Member Best Practices
- Resources Available to Advisors



Best Practices for Working with Today's College Student

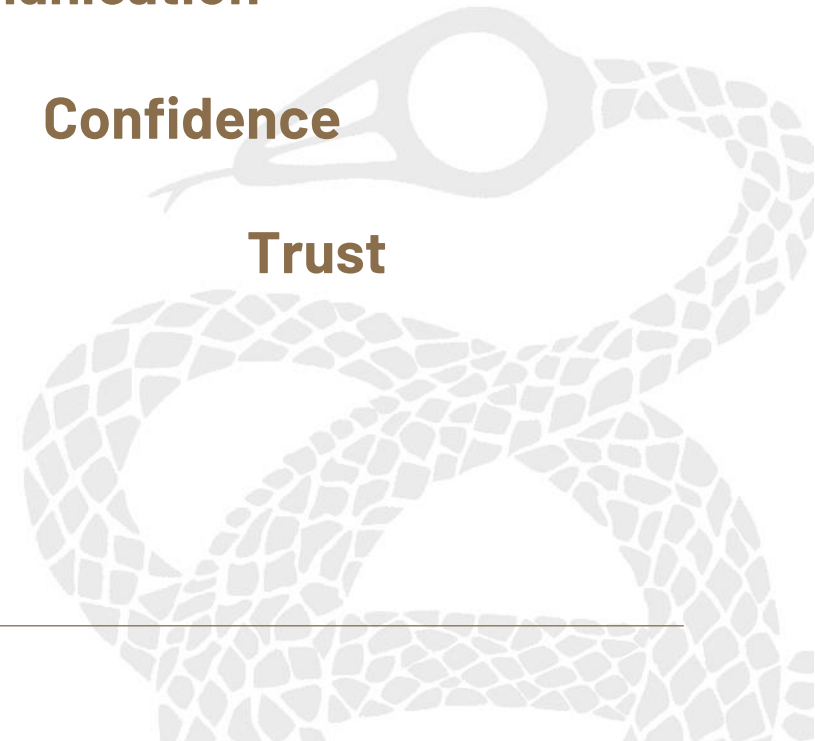


Building Relationships with our students

Communication

Confidence

Trust





Best Practices for Working with Today's College Student

Effective Advising

Be a role model

Hold the chapter to high standards

**Clearly establish your role with the
chapter**

Ask for input

Give them respect

How to be an Effective Advisor Cont.

Work most closely with the chapter officers

Be cautious of talking about the past

Allow mistakes to be made

Build on an officer's strengths

Function as a liaison





Best Practices for Working with Today's College Student

Habits of Successful Advisors

Make yourself available

Increase your knowledge base

Support Chapter Officers in decisions that they have reached jointly

Be familiar with University policies, chapter bylaws, The Law, and support officers and chapters in upholding these rules

Exemplify the ideals of Sigma Nu Fraternity

*When **RESPECT** and **COURTESY** are shared, responsibilities to each other are easily fulfilled.*





Alumni Advisory Board Overview

When college days are through,

We still will cling to you.

Loyal and true,

To you old Sigma Nu.



Primary Expectations of Alumni Advisory Boards

Three or more volunteers will serve on the Alumni Advisory Board

Member(s) of Alumni Advisory Board attend chapter meetings once a month (or more often)

Member(s) of Alumni Advisory Board attend all candidate and initiation ceremonies

Meet quarterly (or more often) to review chapter goals and objectives



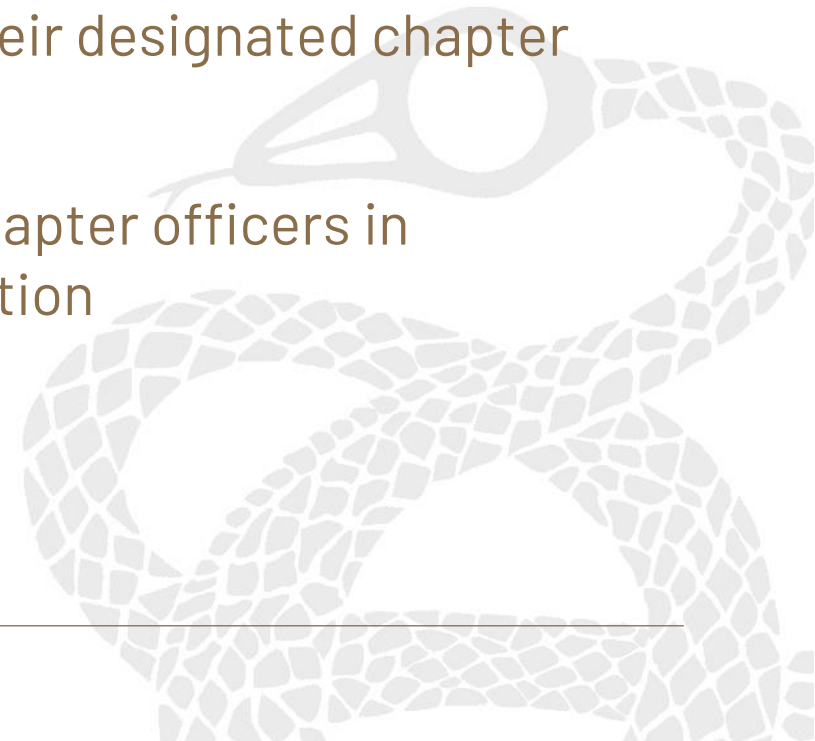
Primary Expectations

Facilitate an officer transition workshop each election cycle

Facilitate a strategic planning session with measurable goals and objectives with the chapter leadership each year

Individual advisors maintain monthly communication with their designated chapter officer(s) to offer mentoring/coaching advice

Member(s) of Alumni Advisory Board assist and advise the chapter officers in completing the annual Pursuit of Excellence Program evaluation

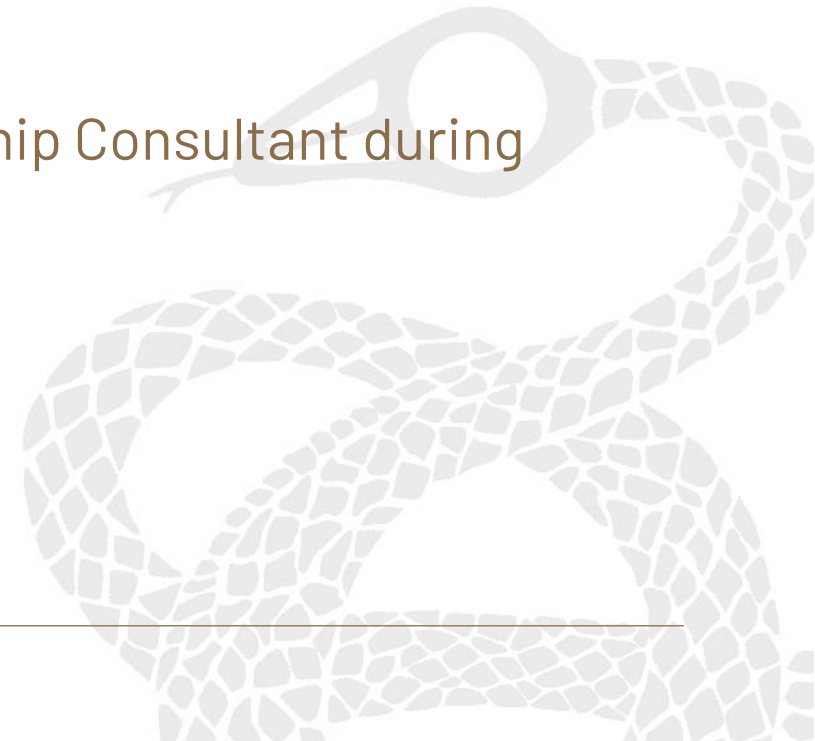


Primary Expectations Cont.

Review *The Law of Sigma Nu Fraternity, Inc.*, the *Risk Reduction Policy and Guidelines*, and relevant college/university policy each year

Continually identify, recruit, and train new Board members to ensure the sustainability of the Board

Member(s) of Alumni Advisory Board meet with the Leadership Consultant during each consultation visit





Recommended Positions for Alumni Advisory Boards

Chairman

Chapter Advisor

Financial Advisor

Recruitment Advisor

LEAD Advisor

Alumni Relations Advisor

Social Advisor

Risk Reduction Advisor

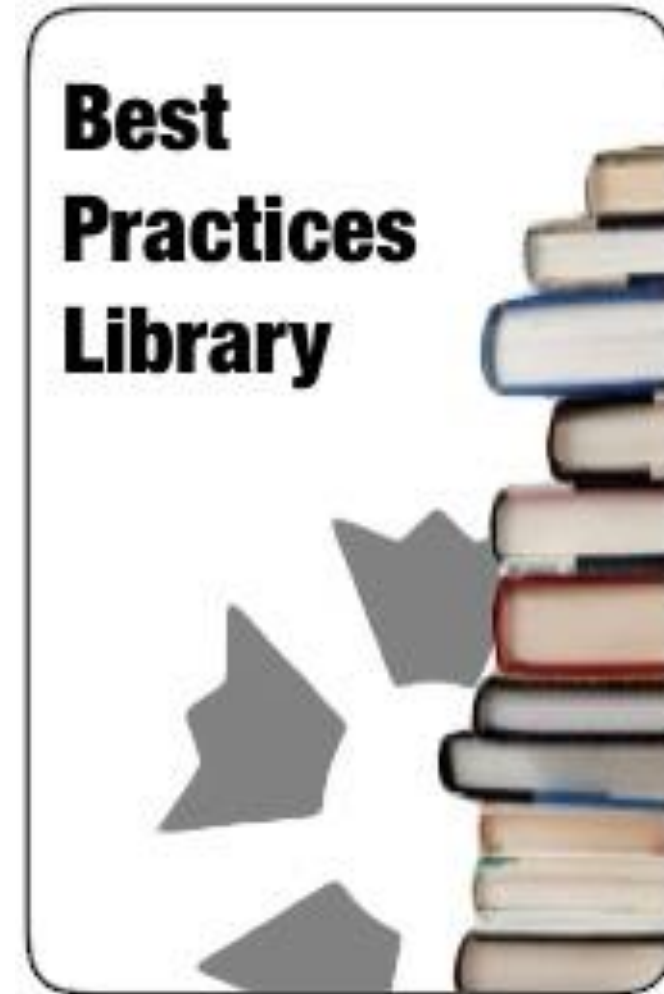
Practices of Successful Alumni Advisory Boards

- **Communication**
- **Board Meetings**
 - Consistent
 - Meet Regularly
 - Require Attendance
 - Include Chapter Officers
- **Recruiting for the future**



Alumni Resources

- [Alumni Advisory Boards](#)
- [House Corporations](#)
- [Alumni Development](#)
- [Alumni Engagement](#)





Resources

- Chapter Officer Manuals
 - The LEAD Program
 - The Pursuit of Excellence Program
 - Human Resources
 - Division Commanders
 - Campus and community Professionals
 - Staff
-

Thank You!



Contact Information

Todd Denson

540-600-3019

todd.denson@sigmanu.org

[Alumni Advisory Board Overview](#)

[Alumni Best Practices Library](#)

[Division Commanders](#)

[Chapter Consultation and Support](#)