



Sigma Nu Fraternity

Alumni Institute Webinar

January 21, 2026

Today's Presenter

Todd Denson

**Director of Alumni Advisory Programs
Nicholls State – (Lambda Lambda)**

Bill Geddy

**Southeast Beta Division Commander
Georgia Southern – (Theta Kappa)**



Program Topics

- **Best Practices for working with Today's College Students**
- **Chapter Advisor and Alumni Advisory Board Member Best Practices**
- **Resources Available to Advisors**



Best Practices for Working with Today's College Student



**Building Relationships with students
takes:**

Communication

Confidence

Trust



Best Practices for Working with Today's College Student

Communication

State Expectations

Establish Goals

Share your

Calendars

Schedules

Appreciation

Confidence

Provide

Positive Direction

Guidance

Assistance

Trust

Honor Commitments

**Keep confidential
matters confidential**



Best Practices for Working with Today's College Student

Effective Advising

Be a role model

Hold the chapter to high standards

Clearly establish your role with the chapter

Ask for input

Give them respect

How to be an Effective Advisor

Work most closely with the chapter officers

Be cautious of talking about the past

Allow mistakes to be made

Build on an officer's strengths

Function as a liaison

*When RESPECT and COURTESY are shared,
responsibilities to each other are easily fulfilled.*



Habits of Successful Advisors

Make yourself available

Increase your knowledge base

Support Chapter Officers in decisions that they have reached jointly

Be familiar with University policies, chapter bylaws, The Law, and support officers and chapters in upholding these rules

Exemplify the ideals of Sigma Nu Fraternity

Increase Your Knowledge Base

- **Utilizing the many resources available to the you through the Fraternity's website**
- **Having frequent communication with the Headquarters staff**
- **Utilizing additional volunteers**



Utilizing the many resources available to you through the Fraternity's website

Officer Manuals

The Law of Sigma Nu Fraternity

The Risk Reduction Policy

Health and Safety Resources

The LEAD Program

Pursuit of Excellence Program

Important Due Dates



Important Due Dates

- **College of Chapters Jan 3-6, 2026**
- **Sigma Nu Institutes:**
 - **Saturday, Jan. 24 (Virtual) - 1:00-5:00 p.m. Eastern**
 - **Saturday, Jan. 31 (In person) - 12:45-5:30 p.m. Local time**
 - Lexington, Virginia
 - Los Angeles, California
 - **Saturday, February 7 (In person)**
 - Atlanta, Georgia
 - Springfield, Missouri
 - Urbana-Champaign, Illinois
- **Membership and Officer Roster Updates - Due Jan 15th**
 - Or by end of second week of school, whichever is later
 - Candidate and Initiation Verifications Due within 72 hours of Ceremony

Important Due Dates

- Feb 15th Risk Reduction Affidavit Due
- Founders Month of Service/Help Hand Initiative - April
- Pursuit of Excellence Submissions - Due April 30
- Tightrope - Due May 1
 - Online education and prevention program-addressing the critical issues of alcohol awareness, drug abuse, sexual assault and misconduct, hazing, and mental wellness for fraternity and sorority members.



College of Chapters (January 3-6)

Intense, interactive program focused on chapter management, leadership, and core competencies.

The curriculum is designed to ensure each Commander has the knowledge and skills necessary to strengthen his chapter and to develop a network of support and experience

sigmanu.org/cofcresources

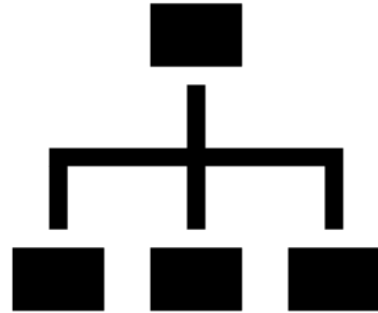


College of Chapters Action Plan



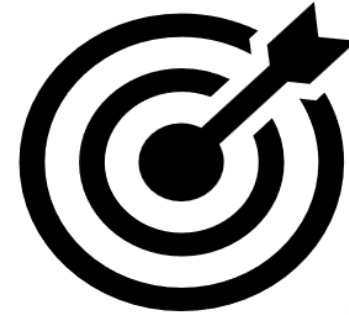
Vision (The Why)

Where your chapter is going
and what it will become



Strategies (The How)

Mini-visions related to key
areas in the chapter – how to
get from where you are to
where you're trying to go



Goals (The What)

Turn-by-turn instructions for
reaching your designation
(vision)– this is what we
specifically need to do to
achieve our strategies

College of Chapters Follow-Up

What should be occurring by now? What could advisors be doing to help support progress?

- Has the participant debriefed with advisors regarding plans and commitments from CofC? Have volunteers provided them feedback?
- Participants were encouraged to take their vision and transform into a shared vision among all members. Have they made their vision known to the Executive Committee yet? Are they building a coalition of support around their vision? Have they thought about how to include others in discussions about how their vision aligns with others' visions?
- Do the strategies and goals in their plan make sense? Are their goals S.M.A.R.T.? How can their strategies and goals be developed into actionable items that can be delegated accordingly?
- Has the participant made plans to present any new information they may have learned to the chapter? How can you help in that process?

All program materials - participant manual, session slides, and any resources or handouts from specific elective sessions can be found at sigmanu.org/cofcreources

Alumni Engagement Series Webinar:

Supporting the Commander's College of Chapters Action Plan and Chapter Goal Setting



Sigma Nu Institute

Virtual

January 24 1:00-5:00 p.m. Eastern

12 officer tracks designed to complement the College of Chapters program experienced by Commanders.

Designed to assist with the officer transition process and learning curve that accompanies taking on new positions of chapter leadership. (For newly elected & mid-term officers)

Attendees will learn about key Fraternity programs, policies, and procedures.



Sigma Nu Institute

In-Person

Saturday, January 31: 12:45-5:30 p.m. (local time)

- **Lexington, Va. - Sigma Nu Headquarters**
- **Los Angeles, Calif.**

Saturday, February 7: 12:45-5:30 p.m. (local time)

- **Atlanta, Ga.**
- **Springfield, Mo.**
- **Urbana-Champaign, Ill.**

These events will focus on executive roles:

Executive - Lt. Commanders & Treasurers

Member Development - Marshals & LEAD Chairmen

Recruitment - Recruitment Chairmen

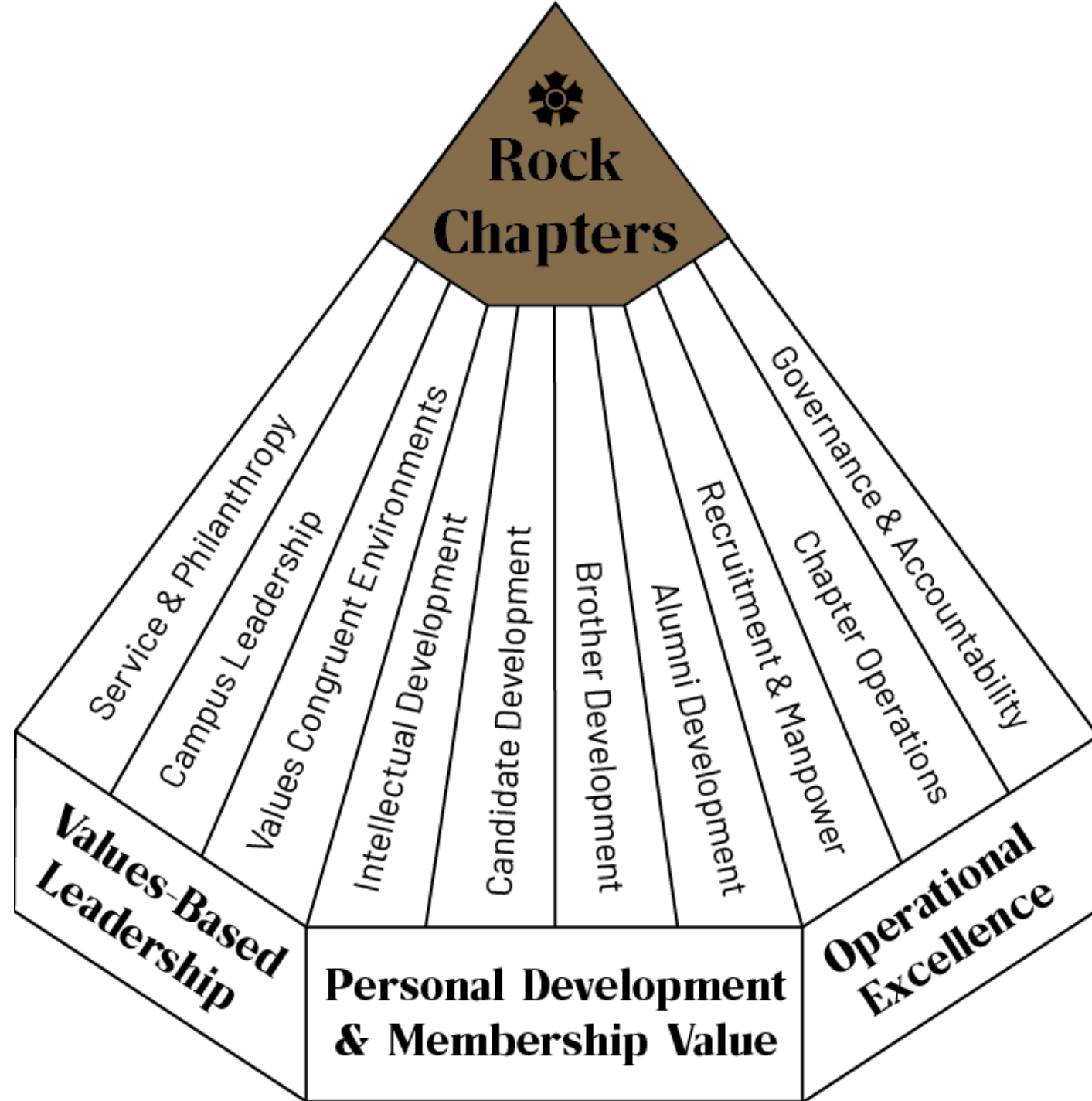
Related officers and committee members are encouraged to attend if a local option is available in your area





Spring '26 Consultations

- **In-Person Consultations – January-April (2 days/chapter)**
 - Officer meetings
 - Executive Committee
 - Candidates (informational, LEAD session)
 - Chapter workshop on *Risk Reduction Policy* and Fraternal Principles
 - Advisor meetings (Chapter/AAB, Fraternity/Sorority Advisor)
- **Potential for Virtual Check-Ins – April**
 - End-of-year programs & expectations, summer and fall planning



The Pursuit of Excellence Submission Due April 30



Alumni Advisory Board Overview

When college days are through,

We still will cling to you.

Loyal and true,

To you old Sigma Nu.



Primary Expectations of Alumni Advisory Boards

**Three or more volunteers will serve
on the Alumni Advisory Board**

**Member(s) of Alumni Advisory Board
attend chapter meetings once a
month (or more often)**

**Member(s) of Alumni Advisory Board
attend all candidate and initiation
ceremonies**

**Meet quarterly (or more often) to
review chapter goals and objectives**



Primary Expectations

Facilitate an officer transition workshop each election cycle

Facilitate a strategic planning session with measurable goals and objectives with the chapter leadership each year

Individual advisors maintain monthly communication with their designated chapter officer(s) to offer mentoring/coaching advice

Member(s) of Alumni Advisory Board assist and advise the chapter officers in completing the annual Pursuit of Excellence Program evaluation

Primary Expectations Cont.

Review The *Law of Sigma Nu Fraternity, Inc.*, the *Risk Reduction Policy and Guidelines*, and relevant college/university policy each year

Continually identify, recruit, and train new Board members to ensure the sustainability of the Board

Member(s) of Alumni Advisory Board meet with the Leadership Consultant during each consultation visit



Recommended Positions for Alumni Advisory Boards

Board Chairman

Chapter Advisor

Financial Advisor

Recruitment Advisor

LEAD Advisor

Alumni Relations Advisor

Social Advisor

Risk Reduction Advisor

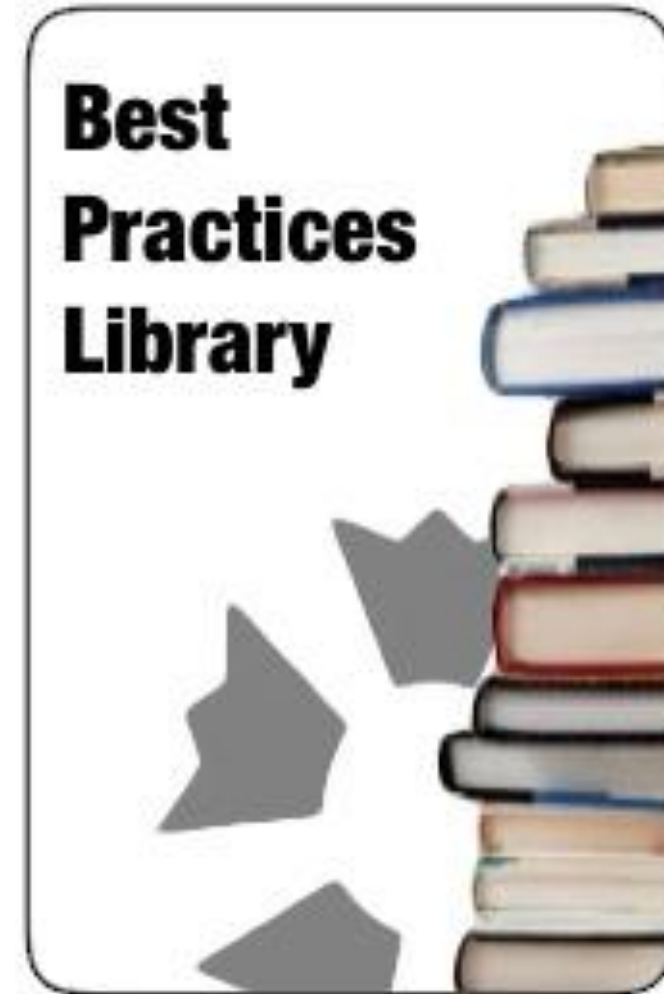
Practices of Successful Alumni Advisory Boards

- **Communication**
- **Board Meetings**
 - Consistent
 - Meet Regularly
 - Require Attendance
 - Include Chapter Officers
- **Recruiting for the future**



Alumni Resources

- [Alumni Advisory Boards](#)
- [House Corporations](#)
- [Alumni Development](#)
- [Alumni Engagement](#)





Resources

- Chapter Officer Manuals
- The LEAD Program
- The Pursuit of Excellence Program
- Human Resources
 - Division Commanders
 - Campus and community Professionals
 - Staff

Alumni Engagement Series Webinars



 **Sigma Nu Fraternity**
EXCELLING
WITH HONOR

UPCOMING WEBINAR

BECOME A SIGMA NU VOLUNTEER

 Wednesday, November 5, 2025
5:00 - 6:00 PM ET/2:00 - 3:00 PM PT

REGISTER TODAY
[SIGMANU.ORG/WEBINARS](https://sigmanu.org/webinars)



 **Sigma Nu Fraternity**
EXCELLING
WITH HONOR

FREE WEBINAR

SIGMA NU MENTOR NETWORK UPDATE

 Wednesday, May 7, 2025
5:00 - 6:00 PM ET/2:00 - 3:00 PM PT

REGISTER TODAY
[SIGMANU.ORG/WEBINARS](https://sigmanu.org/webinars)

Alumni Engagement Series Webinars



Future Webinars - [Sigmanu.org/webinars](https://sigmanu.org/webinars)





Questions?



Thank You!

Todd Denson
Director of Alumni Advisory Programs
540-600-3019
todd.denson@sigmanu.org

Bil Geddy
Southeast Beta Division Commander
404-375-9249
wbgeddy@outlook.com

Resource Links:

[Alumni Advisory Board Overview](#)
[Alumni Best Practices Library](#)
[Division Commanders](#)
[Chapter Consultation and Support](#)

