



Sigma Nu Fraternity

Alumni Institute Webinar

January 17, 2024



Today's Presenter

Todd Denson

**Director of Alumni Advisory Programs
Nicholls State University**



Program Topics

- **Best Practices for working with Today's College Students**
- **Chapter Advisor and Alumni Advisory Board Member Best Practices**
- **Resources Available to Advisors**



Best Practices for Working with Today's College Student



**Building Relationships with students
takes:**

Communication

Confidence

Trust



Best Practices for Working with Today's College Student

Communication

State Expectations

Establish Goals

Share your

Calendars

Schedules

Appreciation

Confidence

Provide

Positive Direction

Guidance

Assistance

Trust

Honor Commitments

**Keep confidential
matters confidential**



Best Practices for Working with Today's College Student

Effective Advising

Be a role model

Hold the chapter to high standards

Clearly establish your role with the chapter

Ask for input

Give them respect

How to be an Effective Advisor

Work most closely with the chapter officers

Be cautious of talking about the past

Allow mistakes to be made

Build on an officer's strengths

Function as a liaison

*When RESPECT and COURTESY are shared,
responsibilities to each other are easily fulfilled.*



Best Practices for Working with Today's College Student

Habits of Successful Advisors

Make yourself available

Increase your knowledge base

Support Chapter Officers in decisions that they have reached jointly

Be familiar with University policies, chapter bylaws, The Law, and support officers and chapters in upholding these rules

Exemplify the ideals of Sigma Nu Fraternity

Increase Your Knowledge Base

- Utilizing the many resources available to the you through the Fraternity's website
- Having frequent communication with the Headquarters staff
- Utilizing additional volunteers



Utilizing the many resources available to you through the Fraternity's website

Officer Manuals (Updated Fall 2023)

The Law of Sigma Nu Fraternity

The Risk Reduction Policy

Health and Safety Resources

The LEAD Program

Pursuit of Excellence Program

Important Due Dates



Important Due Dates

- **College of Chapters Jan 3-6, 2024**
- **Sigma Nu Institutes Saturday, Jan. 20 & 27**
- **Feb 15th Risk Reduction Affidavit Due**
- **Membership and Officer Roster Updates Due Jan 2024**

Candidate and Initiation Verifications Due within 72 hours of Ceremony

- **Founders Month of Service April 2024**
- **Pursuit of Excellence Submissions Due April 30**
- **CommunityEDU completions Due May 1**





Sigma Nu Fraternity

Alumni Engagement Series Webinar

**Supporting the Commander's
College of Chapters Action Plan
and Chapter Goal Setting**

**Best
Practices
Library**



Sigma Nu Institute

- January 20 **1:00-5:00 p.m. Pacific (4:00-8:00 p.m. Eastern)**,
January 27 **1:00-5:00 p.m. Eastern**
- 4-hour afternoon program; 1-5 p.m.
- Participants can attend any program
 - Allows for more individual attendees and officer positions than in-person
 - Expanded tracks – time and # of officers
 - Solves scheduling and geographic limitations
- Info & registration at www.sigmanu.org/institute

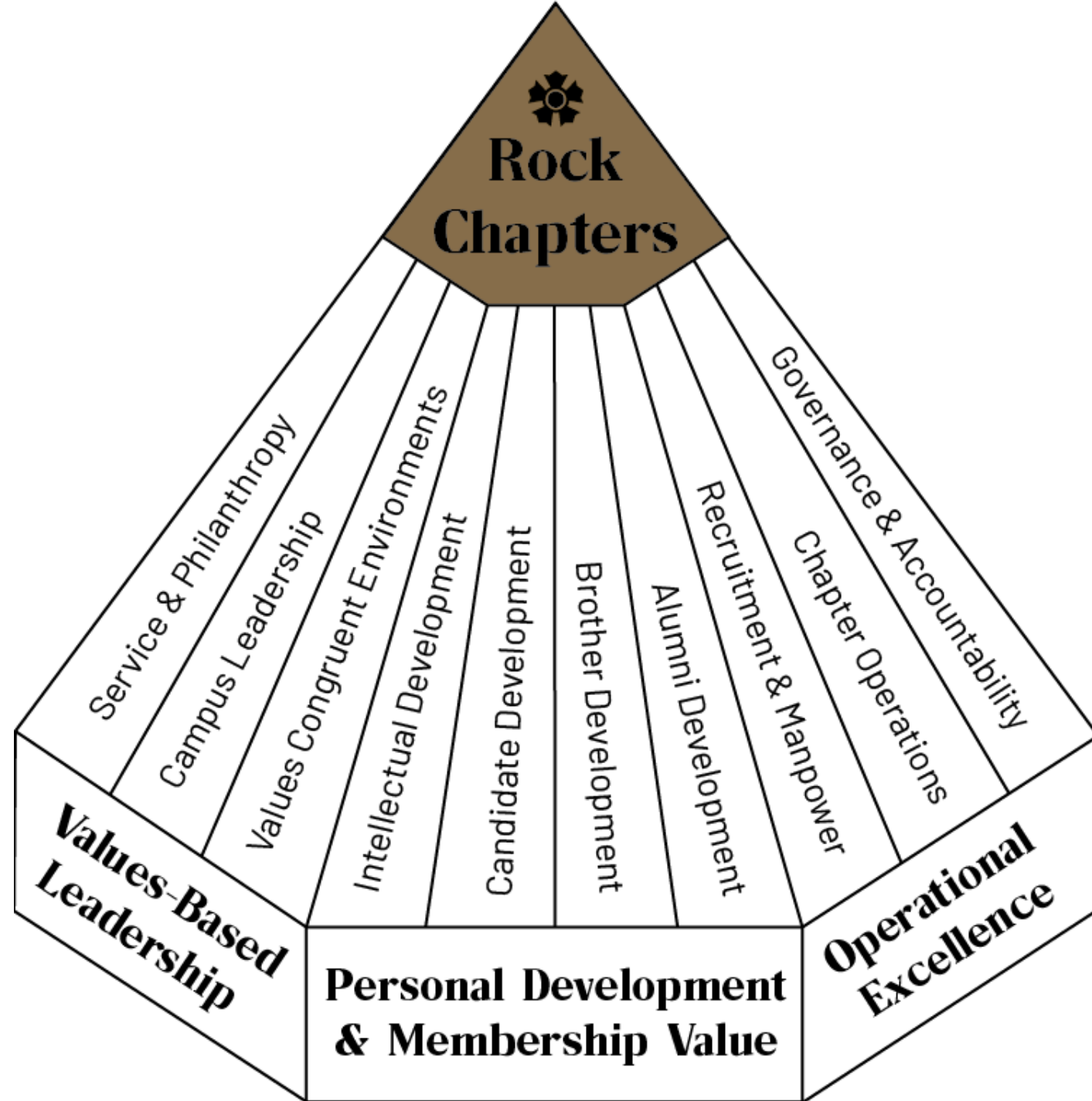




The Helping Hand Initiative

Founders Month of Service:
April 2024





The Pursuit of Excellence Submission Due April 30



Alumni Advisory Board Overview

When college days are through,

We still will cling to you.

Loyal and true,

To you old Sigma Nu.



Primary Expectations of Alumni Advisory Boards

Three or more volunteers will serve on the Alumni Advisory Board

Member(s) of Alumni Advisory Board attend chapter meetings once a month (or more often)

Member(s) of Alumni Advisory Board attend all candidate and initiation ceremonies

Meet quarterly (or more often) to review chapter goals and objectives

Primary Expectations

Facilitate an officer transition workshop each election cycle

Facilitate a strategic planning session with measurable goals and objectives with the chapter leadership each year

Individual advisors maintain monthly communication with their designated chapter officer(s) to offer mentoring/coaching advice

Member(s) of Alumni Advisory Board assist and advise the chapter officers in completing the annual Pursuit of Excellence Program evaluation

Primary Expectations Cont.

Review The *Law of Sigma Nu Fraternity, Inc.*, the *Risk Reduction Policy and Guidelines*, and relevant college/university policy each year

Continually identify, recruit, and train new Board members to ensure the sustainability of the Board

Member(s) of Alumni Advisory Board meet with the Leadership Consultant during each consultation visit



Recommended Positions for Alumni Advisory Boards

Board Chairman

Chapter Advisor

Financial Advisor

Recruitment Advisor

LEAD Advisor

Alumni Relations Advisor

Social Advisor

Risk Reduction Advisor

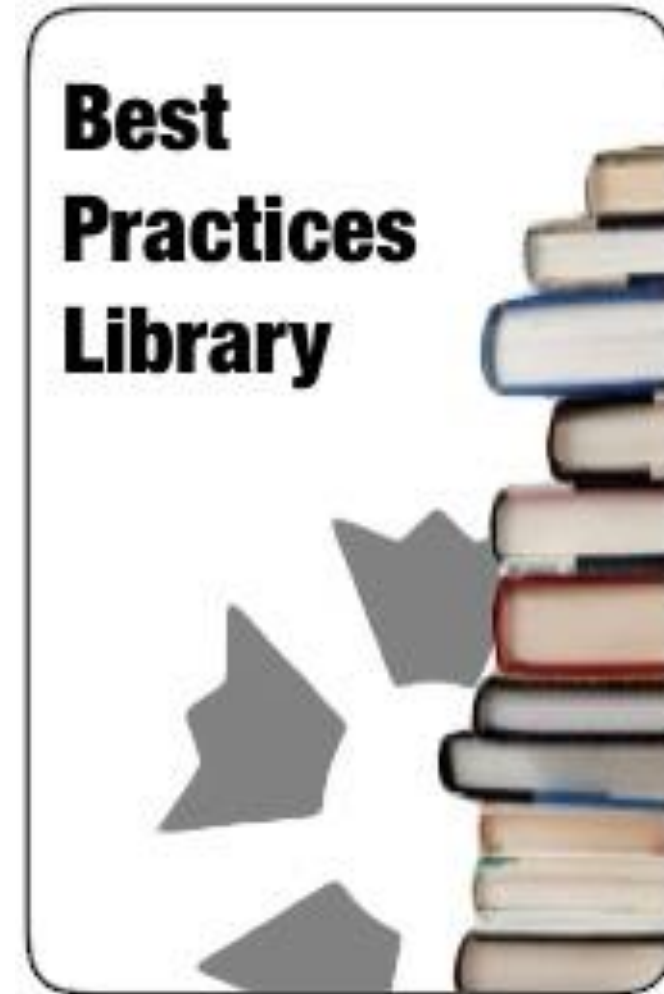
Practices of Successful Alumni Advisory Boards

- **Communication**
- **Board Meetings**
 - Consistent
 - Meet Regularly
 - Require Attendance
 - Include Chapter Officers
- **Recruiting for the future**



Alumni Resources

- [Alumni Advisory Boards](#)
- [House Corporations](#)
- [Alumni Development](#)
- [Alumni Engagement](#)





Resources

- Chapter Officer Manuals
- The LEAD Program
- The Pursuit of Excellence Program
- Human Resources
 - Division Commanders
 - Campus and community Professionals
 - Staff



Questions?



Thank You!

Todd Denson
Director of Alumni Advisory Programs
540-600-3019
todd.denson@sigmanu.org

Resource Links:
[Alumni Advisory Board Overview](#)
[Alumni Best Practices Library](#)
[Division Commanders](#)
[Chapter Consultation and Support](#)

